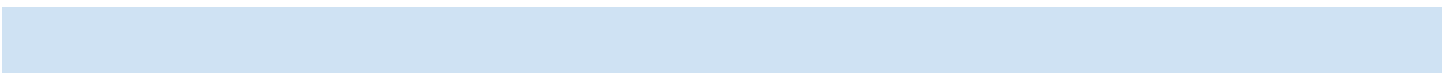


The Rigler Learning Family takes responsibility to engage all students in our school, in particular our Black, Native American and Latinx students, through rigorous instruction using grade level content within a healthy, positive, and inclusive learning environment. We collaborate and reflect on data to address student learning needs, both with our staff and community members. Students develop high levels of proficiency in both Spanish and English as demonstrated by multiple points of data. Students learn and practice our school agreements. We reflect our students' unique cultures, fostering a sense of belonging, in our curriculum and practices.

La familia de aprendizaje de Rigler asume la responsabilidad de involucrar a todos los estudiantes de nuestra escuela, en particular a nuestros estudiantes negros, nativos americanos y latinx, a través de una instrucción rigurosa que utiliza contenido de nivel de grado dentro de un entorno de aprendizaje saludable, positivo e inclusivo. Colaboramos y reflexionamos sobre los datos para abordar las necesidades de aprendizaje de los estudiantes, tanto con nuestro personal como con los miembros de la comunidad. Los estudiantes desarrollan altos niveles de competencia tanto en español como en inglés, como lo demuestran múltiples puntos de datos. Los estudiantes aprenden y practican los acuerdos de nuestra escuela. Reflejamos las culturas únicas de nuestros estudiantes, cultivando un sentido de pertenencia, en nuestro plan de estudios y prácticas.

prajan, 2022
School's
9

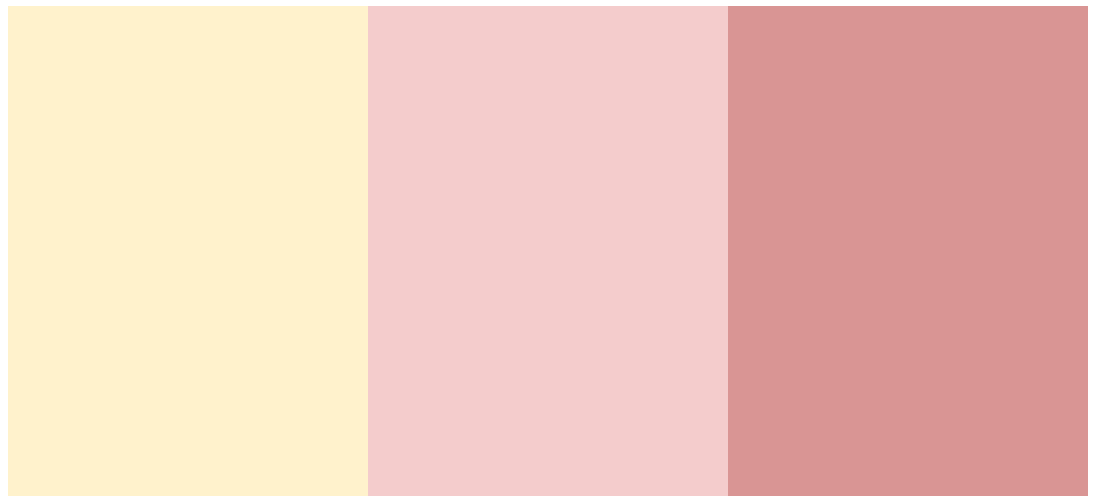
Scho!

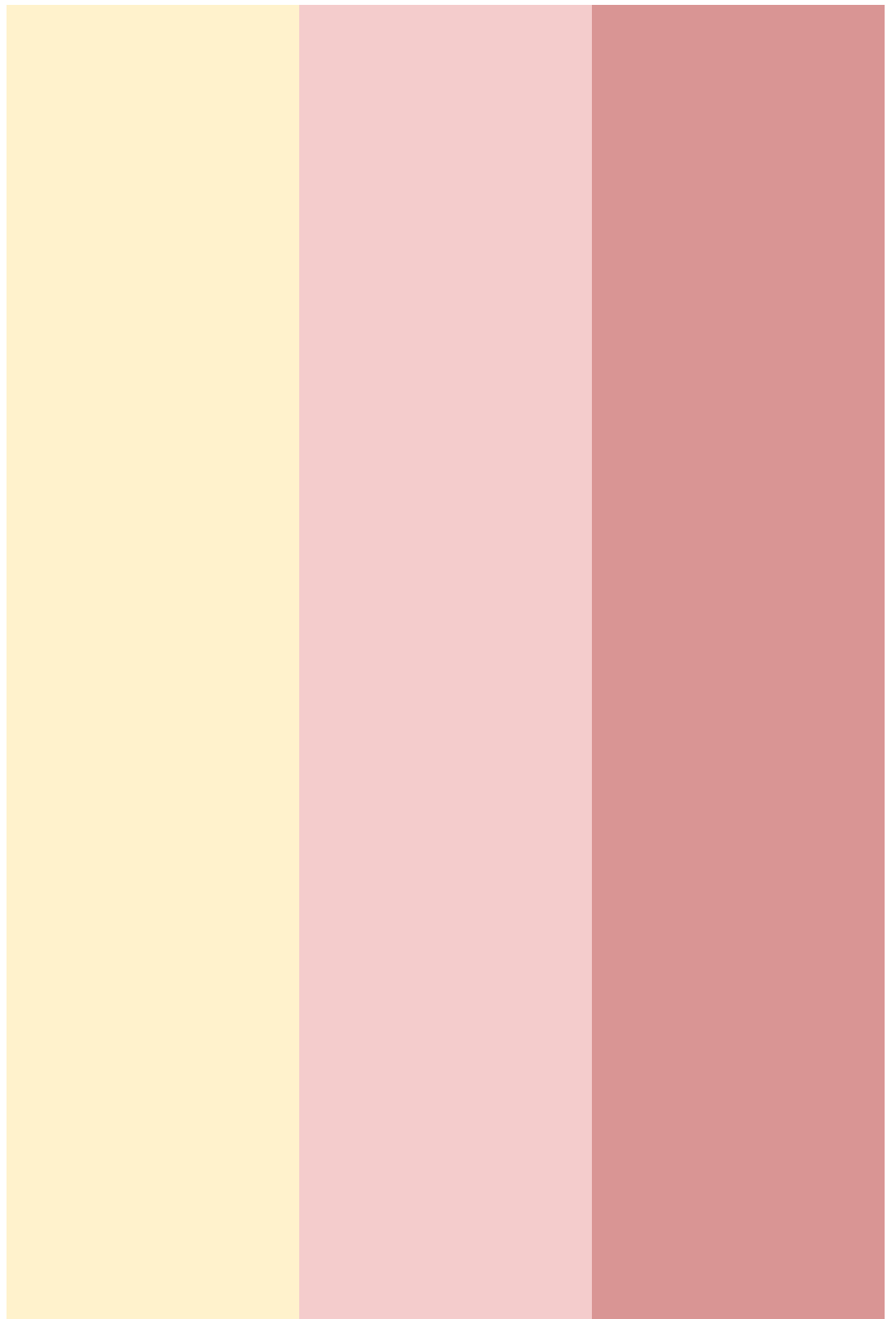


Staff will actively supervise all duty areas per their assignment. Active supervision is the alert, proactive ability of the staff member to circulate within a group of students while interacting in a positive and constructive way. This includes acknowledging positive behaviors and actions, scanning for potential growth areas, modeling and supporting regulation strategies, and using restorative practices to reduce and repair harm.

What does ACTIVE SUPERVISION
like?

What





This [discipline flowchart](#) describes how staff respond to student misbehaviors and this [protocol](#) describes the process to call for support with addressing student behavior. This [document outlines for students](#) restorative support strategies staff will implement to improve students' behavior.

If a student is escalated such that the flowchart below does not meet their needs, they may utilize the school's deescalation space. At Rigler, we call this the Wiggle Room. In the Wiggle Room, students have space
p



Leadership to develop student capacity and encourage student voice in upper grades
RainbowAlliance
Black Student Union

Spirit Days

Fall and ongoing

Counselor and Student Leadership will coordinate

Lizzie will coordinate

(To be updated in August, 2024).

AUGUST

Connect to Kinder
Community Care Day

SEPTEMBER

Back to School Night
Climate Team Meetings
Site Council Meeting

OCTOBER

Climate Team Meetings
Literacy Night
Site Council Meeting

NOVEMBER

Dia de los Muertos Celebration
Climate Team Meetings
Conferences
Site Council Meeting

DECEMBER

Climate Team Meeting
Site Council Meeting

JANUARY

Community Care Day
Climate Team Meeting
Site Council Meeting

Climate Team Meeting
Site Council Meeting

